
Using Your Coffeemaker

EASY-TO-FOLLOW BREWING INSTRUCTIONS



Make sure the brewer is plugged in.
Depress the large "PRESS TO OPEN" button on top of the brewer.



The water tank will open automatically. Fill the water tank with tap water or bottled water up to the "FILL LEVEL" indicator.



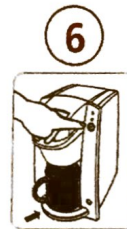
Place a K-Cup® portion pack in the K-Cup holder.
Do not remove the foil lid.



Close the water tank cover. The "PLACE CUP" light will be flashing. Place a 10 oz. coffee cup in the dispense area on the drip tray.



Lower the handle completely and firmly to close the lid and puncture the K-Cup portion pack.



Press the flashing "BREW" button. The "HEATING" light will be illuminated. When the water reaches temperature, the "HEATING" light will go off and the coffee/tea will start to dispense.
The coffee or tea will be ready in less than 3 minutes.

Helpful Hints:

- 1. It's best to use the cup you'll be drinking from to fill the water tank. This way, you'll know the amount of water is just right for your cup.**
- 2. DO NOT open the K cup itself. The machine will puncture it when needed.**
- 3. Also, make sure the cup is placed well under the dispenser, since there is a sensor which will stop the coffeemaker from working if it doesn't sense a cup in place.**
- 4. If the blue "Brew" light doesn't come on, try repositioning your cup.**